

# STEVCO



# SEALS



MECHANICAL SEAL SOLUTIONS

## TYPE 2-6

(Similar to Crane type 6)

### DESIGN FEATURES & BENEFITS

#### One Piece Construction

Factory-assembled seal permits fast, easy production line installation and replacement.

#### Elastomer Drive Ring

The Type 2-6 seal is pre-loaded on shaft, with an elastomer drive ring that grips the shaft and makes tight contact with shoulder of driving sleeve.

#### Flexible Bellows

Full convolution elastomer bellows provide maximum flexibility in compensating for shaft movement and wear.

#### Spring

Precision lapped faces are kept in automatic contact by spring pressure. Metal ferrules assure even distribution of spring load.

### SEAL APPLICATIONS

For low pressure, small diameter rotary shaft applications in hydraulic fluids, aqueous solutions, and light oils.

Type 2-6 Seals are designed for use in small centrifugal water pumps, deep and shallow well jet pumps, swimming pool pumps, speed reducers, fuel oil, hydraulic and other positive displacement pumps.

### OPERATING CONDITIONS

#### •Pressures:

Type 2-6: To 75psig (5 bar)

500kPa

#### •Temperatures:

-40°C to +205°C

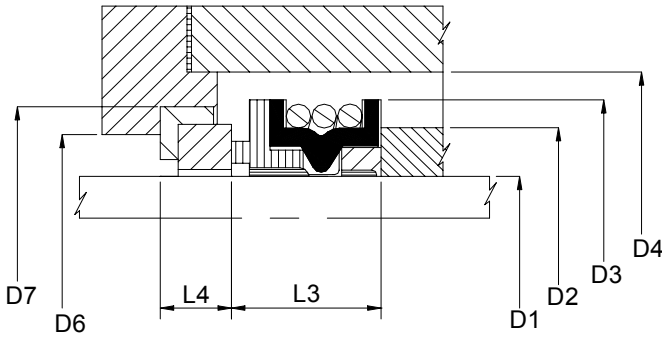
(See reverse page for Elastomer Graph)

#### •Speed:

Up to 3,600 RPM

# STEVCO 2-6 SPECIFICATIONS

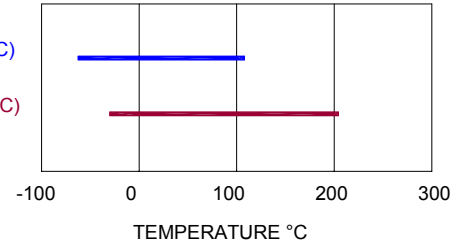
## GA Drawing



## ELASTOMER TEMPERATURE LIMITS

BUNA (-40°C TO 107°C)

VITON (-29°C TO 204°C)



SEAL SIZE		D1	D2	D3	D4	D6	D7	L3	L4
Imperial	Metric								
0.375	9.52	9.52	20.64	26.99	33.34	19.05	25.40	15.87	7.94
0.437	11.10	11.10	20.64	26.99	33.34	19.05	25.40	16.67	7.94
0.500	12.70	12.70	20.64	26.99	33.34	19.05	25.40	16.67	7.94
0.562	14.27	14.27	23.81	30.96	38.10	23.81	31.75	18.25	10.32
0.625	15.87	15.87	23.81	30.96	38.10	23.81	31.75	18.25	10.32
0.687	17.45	17.45	26.99	34.13	41.28	26.99	34.92	18.25	10.32
0.750	19.05	19.05	26.99	34.13	41.28	26.99	34.92	18.25	10.32
1.000	25.40	25.40	33.34	42.86	50.80	33.34	41.28	20.64	11.11

## MATERIAL CHOICES

### Faces:

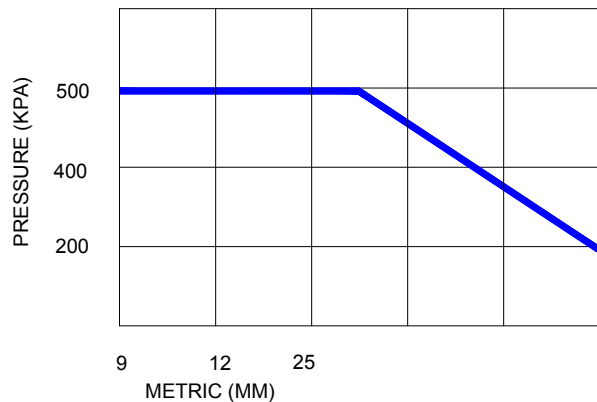
Rotary- Carbon and Silicon Carbide.

Stationary- Ceramic, Silicon Carbide, Tungsten Carbide and Ni-Resist.

### Hardware:

304 S/S.

## PV LIMITS



## STEVCO SEALS AND PUMPS PTY LTD

11 Samantha Place, SMEATON GRANGE NSW 2567 ~ Ph (02) 4629 6500

## STEVCO SEALS & PUMPS VICTORIA P/L

U8, 53 Gateway Blvd, EPPING VICTORIA 3076 Ph (03) 9408 3875