

STEVCO



SEALS

MECHANICAL SEAL SOLUTIONS



TYPE 2-8

(Similar to Crane type 502)

DESIGN FEATURES & BENEFITS

Compact Design

The Type 2-8 is a full convolution elastomeric bellows seal designed for confined spaces and limited gland depths. Self aligning feature compensates for excessive shaft end play and run-out.

Reliability

Non-clogging single coil spring for dependability.

Easy Fitting

Supplied completely assembled for fast installation. Field repairable.

European Standards

Complies with DIN 24960, ISO 3069 and BS.5257:1975.

SEAL APPLICATIONS

All types of rotary equipment, pumps, marine, mixers, agitators and compressors in a variety of service applications.

Suitable for most general and light chemical duties, ranging from water to weak acid solutions, wherever elastomer secondary seals can be used.

OPERATING CONDITIONS

•Pressures:

Type 2-8: To 580psig (40 bar), 4000kPa

•Temperatures:

-40°C to +200°C

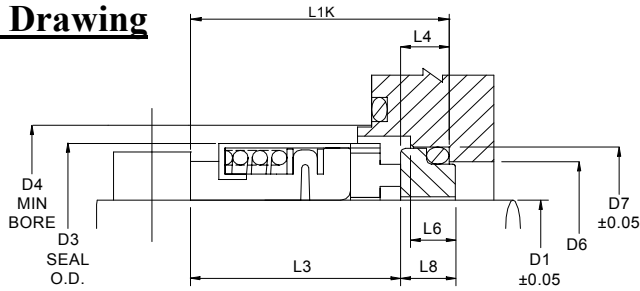
(See reverse page for Elastomer Graph)

•Speed:

Up to 4000 RPM

STEVCO 2-8 SPECIFICATIONS

GA Drawing



Material Options

Faces:

Rotary- Carbon, Tungsten Carbide and Silicon Carbide.

Stationary- Ceramic, Silicon Carbide, Tungsten Carbide and Ni-Resist.

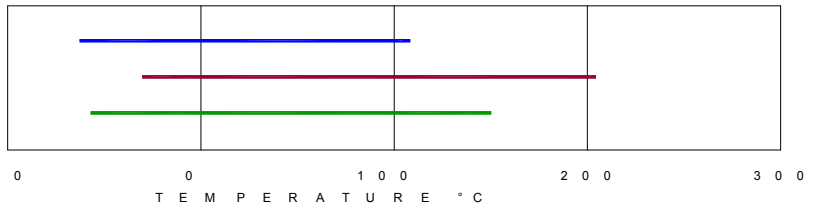
Hardware:

316 Stainless Steel.

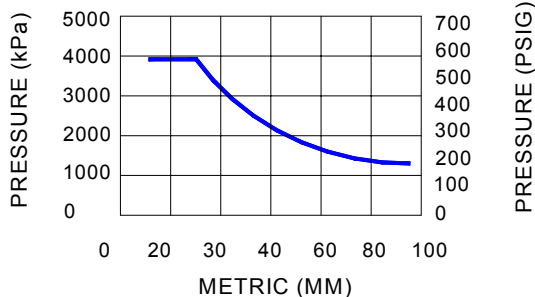
Size	D1	D3	D4	L1K	L3	D7	L8	L4	L6	D6
14	14	24	26	35.0	23.0	25	12.8	12.0	4	21
16	16	26	28	35.0	23.0	27	12.8	12.0	4	23
18	18	32	34	37.5	24.0	33	14.5	13.5	5	27
20	20	34	36	37.5	24.0	35	14.5	13.5	5	29
22	22	36	38	37.5	24.0	37	14.5	13.5	5	31
24	24	38	40	40.0	26.7	39	14.3	13.3	5	33
25	25	39	41	40.0	27.0	40	14.0	13.0	5	34
28	28	42	44	42.5	30.0	43	13.5	12.5	5	37
30	30	44	46	42.5	30.5	45	13.0	12.0	5	39
32	32	46	48	42.5	30.5	48	13.0	12.0	5	42
33	33	47	49	42.5	30.5	48	13.0	12.0	5	42
35	35	49	51	42.5	30.5	50	13.0	12.0	5	44
38	38	54	58	45.0	32.0	56	14.0	13.0	6	49
40	40	56	60	45.0	32.0	58	14.0	13.0	6	51
43	43	59	63	45.0	32.0	61	14.0	13.0	6	54
45	45	61	65	45.0	32.0	63	14.0	13.0	6	56
48	48	64	68	45.0	32.0	66	14.5	13.0	6	59
50	50	66	70	47.5	34.0	70	14.5	13.5	6	62
53	53	69	73	47.5	34.0	73	14.5	13.5	6	65
55	55	71	75	47.5	34.0	75	14.2	13.5	6	67
58	58	78	83	52.5	39.0	78	14.2	13.5	6	70
60	60	80	85	52.5	39.0	80	14.2	13.5	6	72
63	63	83	88	52.5	39.0	83	14.2	13.5	6	75
65	65	85	90	52.5	39.0	85	14.2	13.5	6	77
68	68	88	93	52.5	39.0	90	14.2	13.5	7	81
70	70	89	95	60.0	45.5	92	15.2	14.5	7	83
75	75	96	104	60.0	45.5	97	15.2	14.5	7	88
80	80	104	109	60.0	45.0	105	15.7	15.0	7	95
85	85	108	114	60.0	45.0	110	15.7	15.0	7	100
90	90	114	119	65.0	50.0	115	15.7	15.0	7	105
95	95	118	124	65.0	50.0	120	15.7	15.0	7	110
100	100	124	129	65.0	50.0	125	15.7	15.0	7	115

ELASTOMER TEMPERATURE LIMITS

BUNA (-40 °C TO 107 °C)
 VITON (-29 °C TO 204 °C)
 EPDM (-45 °C TO 149 °C)



PV LIMITS



CARBON VS SILICON CARBIDE
 OR TUNGSTEN CARBIDE
 AT 1450 TO 1740 RPM

LUBRICATING SEALED FLUID AT 30°C

1. Lubricating liquid is defined as having lubricating properties of gasoline or better.



STEVCO SEALS AND PUMPS PTY LTD

11 Samantha Place, SMEATON GRANGE NSW 2567 ~ Ph (02) 4629 6500

STEVCO SEALS & PUMPS VICTORIA P/L

U8, 53 Gateway Blvd, EPPING VICTORIA 3076 Ph (03) 9408 3875