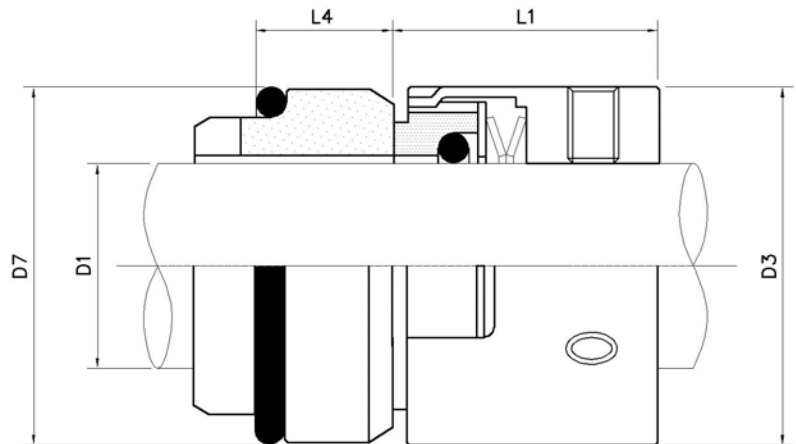


# M7N



## Design Features

Metric size shafts to comply with DIN 24960 L1k  
 Wave spring arrangement  
 Unbalanced seals  
 Independent on direction of rotation

## Operating Conditions

**Temperature:** -30°C to +260°C  
 (Depending on materials used)  
**Pressure:** Up to 17 bar , 245 psi  
**Speed:** Up to 20m/s, 4000rpm

## Materials available

**Seal face:** carbon/sic, sic/sic  
**Elastomer:** nitrile, viton, neoprene, EPD, PTFE

## Equivalent to

M7N

**Standard seat** G9

**Alternative seat** G4, G13, G6

D1	D3	D7	L1	L4	L1K=L1+L4
22mm	37	37	26.0	11.5	37.5
24mm	39	39	28.5	11.5	40.0
25mm	40	40	28.5	11.5	40.0
28mm	43	43	31.0	11.5	42.5
30mm	45	45	31.0	11.5	42.5
32mm	47	48	31.0	11.5	42.5
33mm	48	48	31.0	11.5	42.5
35mm	50	50	31.0	11.5	42.5
38mm	55	56	31.0	14.0	45.0
40mm	57	58	31.0	14.0	45.0
43mm	60	61	31.0	14.0	45.0
45mm	62	63	31.0	14.0	45.0
48mm	65	66	31.0	14.0	45.0
50mm	67	70	32.5	15.0	47.5
53mm	70	73	32.5	15.0	47.5
55mm	72	75	32.5	15.0	47.5
58mm	79	78	37.5	15.0	52.5
60mm	81	80	37.5	15.0	52.5
63mm	84	83	37.5	15.0	52.5
65mm	86	85	37.5	15.0	52.5
68mm	89	90	34.5	18.0	52.5
70mm	91	92	42.0	18.0	60.0
75mm	99	97	42.0	18.0	60.0
80mm	104	105	41.8	18.2	60.0
85mm	109	110	41.8	18.2	60.0
90mm	114	115	46.8	18.2	65.0
95mm	119	120	47.8	17.2	65.0
100mm	124	125	47.8	17.2	65.0