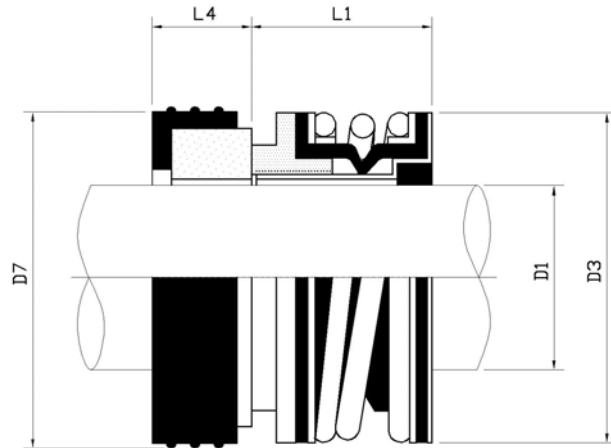


T6



Operating Conditions

Temperature: -30°C to +200°C
(Depending on materials used)

Pressure: Up to 5 bar , 75 psi

Speed: Up to 5m/s, 1000fpm

Materials available

Seal face: carbon, ceramic, sic

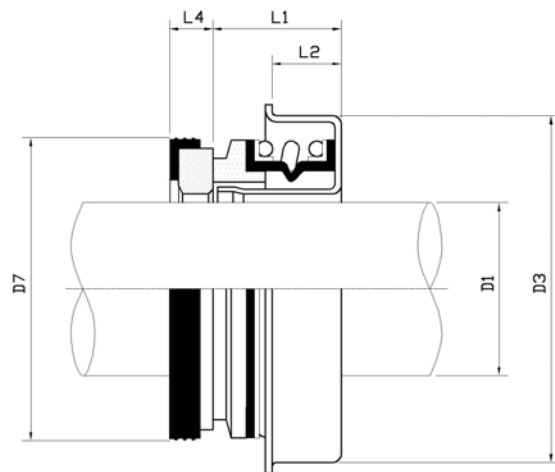
Elastomer: nitrile, viton

Equivalent to

T6, T16, BO4

D1(IN)	D3	D7	L1	L4	L=L1+L4
0.375	24	22.2	16.7	6.3	23
0.500	27	25.4	16.7	8	24.7
0.625	31	31.75	18.3	10.3	28.6
0.750	35	34.95	18.3	10.3	28.6
1.000	43.5	41.3	20.7	11	31.7

T6A / T7



Design Features

stationary seal design

Pressure: Up to 4 bar , 60 psi

Speed: up to 45m/s, 9000fpm

Materials available

Seal face: carbon, ceramic, sic

Elastomer: nitrile, viton

Equivalent to

T6A, T68, T7, T790, BO3

D1	D3	D7	L1	L2	L4
0.375	24.0	23.0	10.0	8	
0.500	28.5	25.4	10.2	8	6.3
0.500	30.0	25.0	10.2	8	5.0
0.500	33.4	25.4	10.2	8	6.3
0.625	36.5	31.0		10	10.3
0.625	38.1		11.0	10	
0.750	40.0	35.0	11.0	10	10.3
1.000	47.0	41.3	19.0	12	
1.125	52.0	48.0	16.0	12	